

NOW  
OPEN

SHERWIN-WILLIAMS®

PARACLETE  
retail real estate advisors



# RIGGS CORNER

*1817-1827 East West Highway | Hyattsville, MD*

ANDREA PATRIZIO  
443.632.7464  
andrea@paracleterealty.com

DANIEL PATRIZIO  
410.905.5364  
dan@paracleterealty.com

# MARKET AERIAL

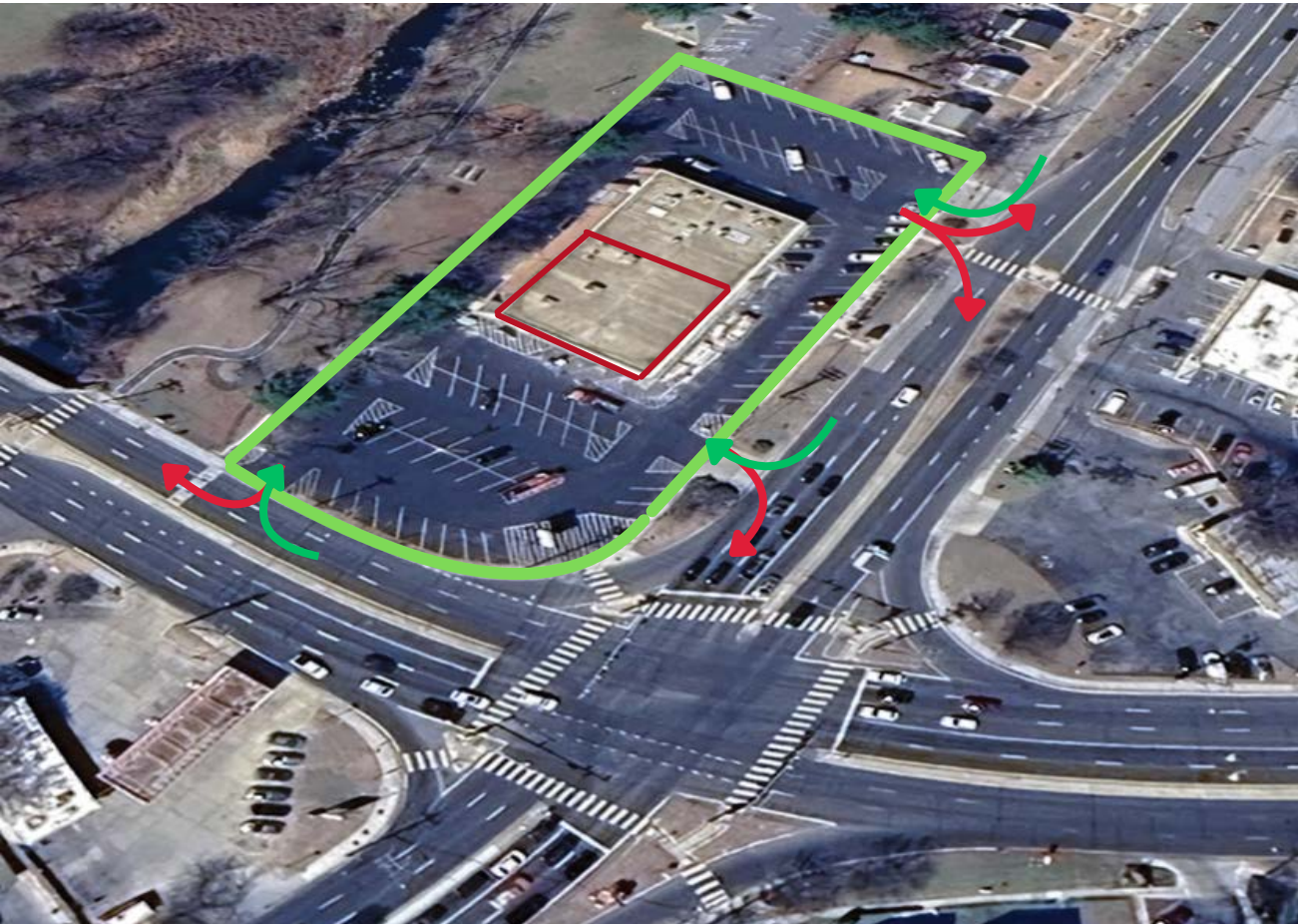


Space for Lease

1817-1827 East West Highway | Hyattsville, MD



# PROPERTY DETAILS



## RETAIL FOR LEASE

### AVAILABLE

➡ *2,100sf up to 6,248sf*

### PROPERTY OVERVIEW

Newly renovated 15,620sf retail center with surface parking retail center at the highly trafficked intersection of Riggs Road and East West Highway

### LOCAL TRAFFIC

East-West Highway	48,782 AADT
Riggs Road	35,424 AADT

### JOIN

**SHERWIN-WILLIAMS.**

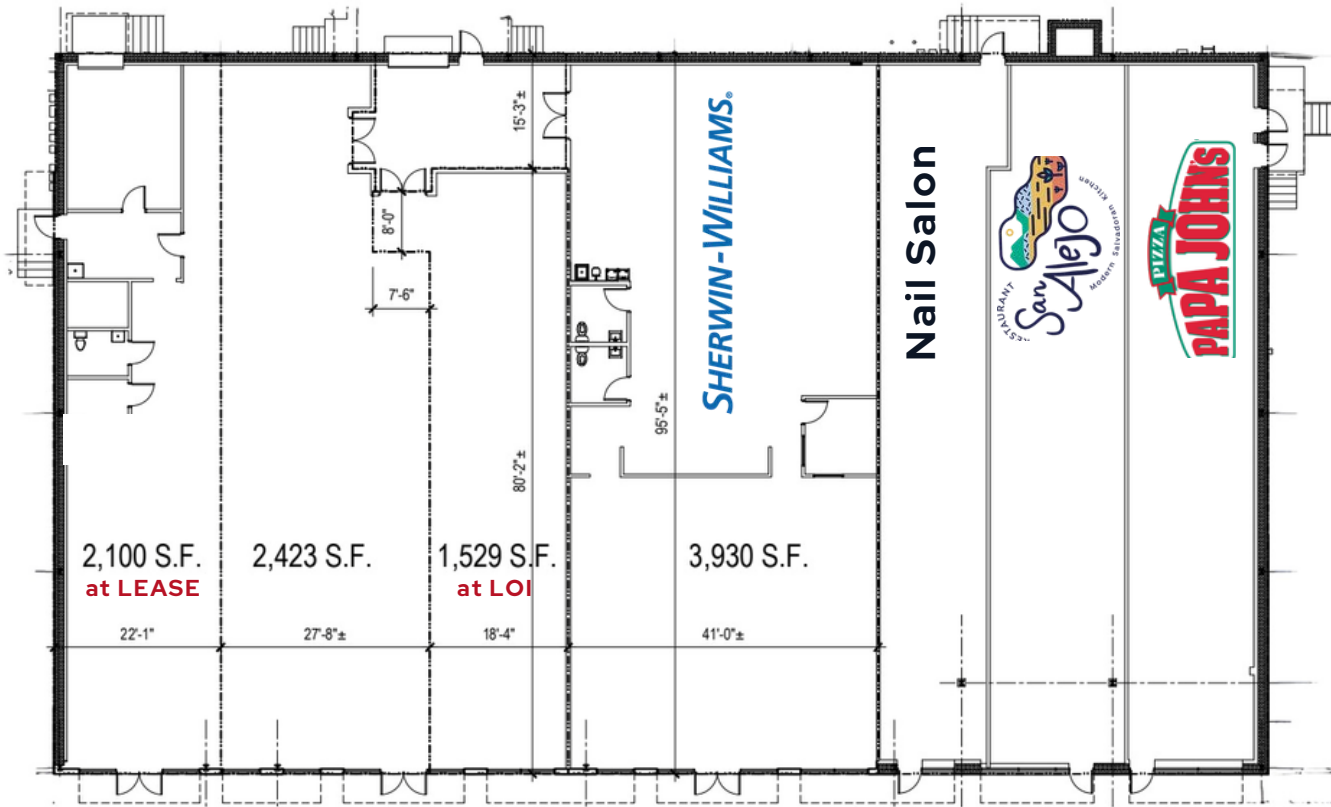


Space for Lease

1817-1827 East West Highway | Hyattsville, MD



# SITE PLAN



## TENANT ROSTER

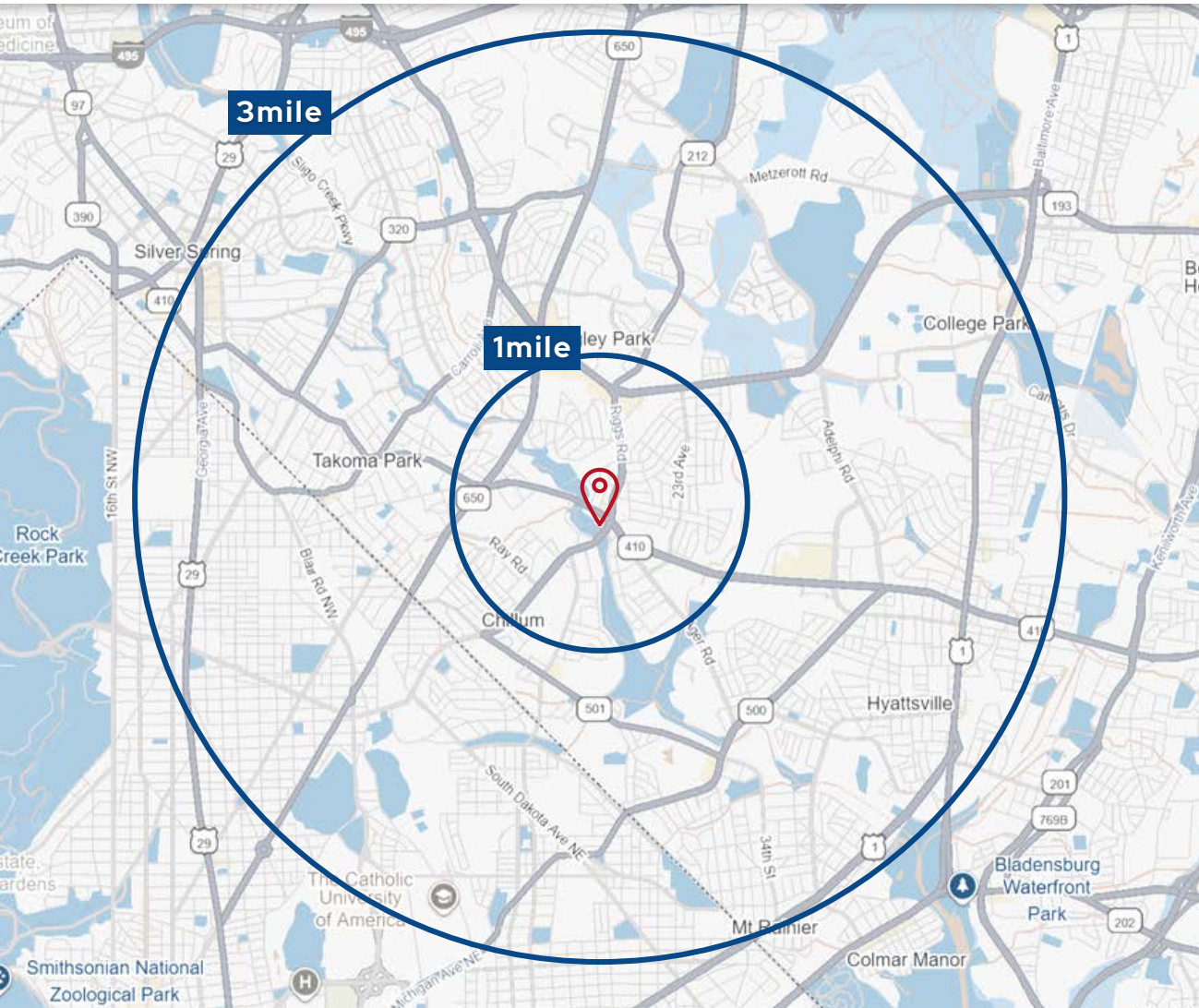
1817	Papa Johns	1,500sf
1819	Comedor San Alejo	1,600sf
1821	Nail Salon	1,500sf
1823-A	Sherwin Williams	3,863sf
<b>1823-B/C</b>	<b>AVAILABLE</b>	<b>3,952sf</b>
<b>1827</b>	<b>AT LEASE</b>	<b>2,100sf</b>

Space for Lease

1817-1827 East West Highway | Hyattsville, MD



# DEMOGRAPHICS



## BY RADIUS

1mile	3miles	5miles
<i>POPULATION</i>		
32,269	283,602	676,480
<i>HOUSEHOLDS</i>		
10,529	100,987	268,222
<i>MEDIAN HOUSEHOLD INCOME</i>		
\$108.7k	\$122.8k	\$147.7k

Space for Lease

1817-1827 East West Highway | Hyattsville, MD



# RIGGS CORNER

ANDREA PATRIZIO  
443.632.7464  
andrea@paracleteready.com

DANIEL PATRIZIO  
410.905.5364  
dan@paracleteready.com

**PARACLETE**  
retail real estate advisors

2000 Duke Street, Suite 300 | Alexandria, VA 22314  
703.972.6000

<http://www.paracleteready.com>

While we have no reason to doubt the accuracy of any of the information supplied, we cannot, and do not, guarantee its accuracy. All information should be independently verified prior to a purchase or lease of the property. We are not responsible for errors, omissions, misuse, or misinterpretation of information contained herein & make no warranty of any kind, express or implied, with respect to the property or any other matters.